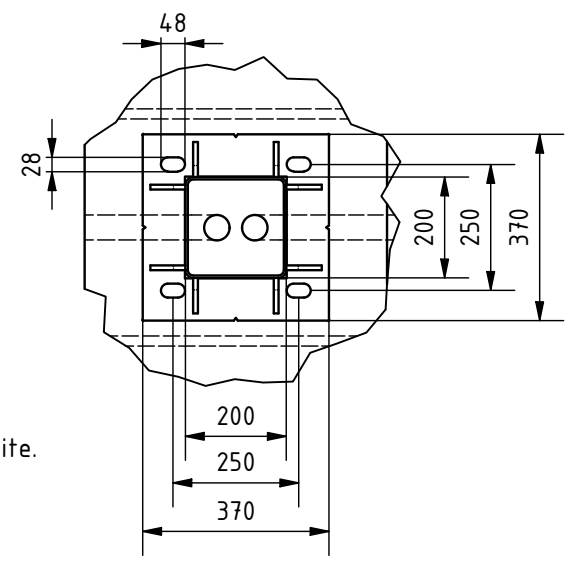


A-A (1 : 30)
7400

C (1 : 15)

- Comments:
1. All dimensions are in mm.
 2. **Concrete and steel grade, reinforcement plans, steel lists see separate documents.**
 3. The base of the foundations must be frost-resistant.
 4. For gate installation use baskets inside concrete or use anchors M24 x 400 or longer. Anchors must be over concrete surface between 70 - 100 mm .
 5. For gate installation, use wire pipes Ø50.
 6. Placing the gate on or in the foundation depends on the detailed gate size and should be determined on-site.
 7. The ground catcher should be placed after gate installation.
 8. The power supply cable should be routed according to the cabinet placement.
 9. All dimensions must be checked on-site.
 10. This is a suggested foundation plan, including dimensions, reinforcement, and anchoring.



	Remarks				
	Designed by K. Rączkowski	Scale 1 : 30	Format A3	Data 14.08.2025	Sheet number 1/1
Edited by	Height ---	Width ---	Material ---	Mass ---	
Number 03748.0000	Drawing Valhalla 2W 7000 Foundation			Rev. A	